

JIBBI

1670 EVO

PATENT PENDING



PRO ACTIVE LEVELLING

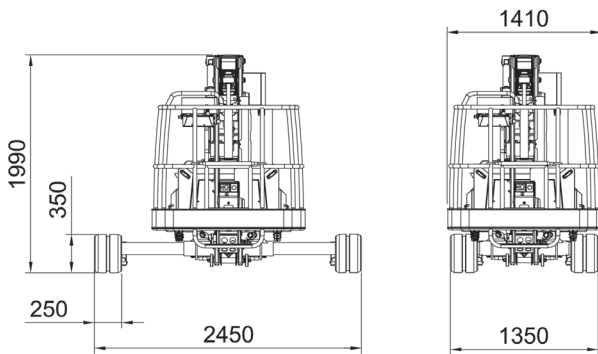
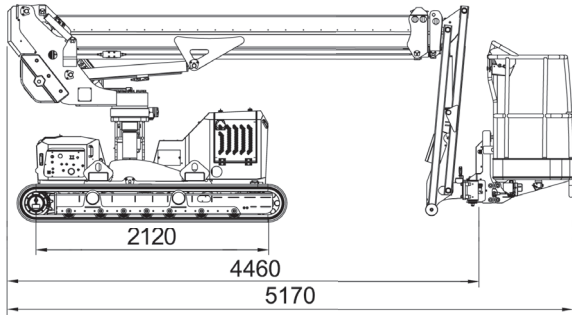
DYNAMIC LEVELLING

CRAWLER TELESCOPIC BOOM

ALMACRAWLER 
ALMAC-PACIFIC.COM.AU

JIBBI 1670 EVO

16 mt crawler telescopic boom.



Integrated Drive System
Using single joystick



Cable remote console by AUTECH

MyAlmac
CONTROL PANEL



Machine settings remote control panel

Basket rotation

$\pm 70^\circ$



Slewing ring rotation

$\pm 110^\circ$



Resizable undercarriage

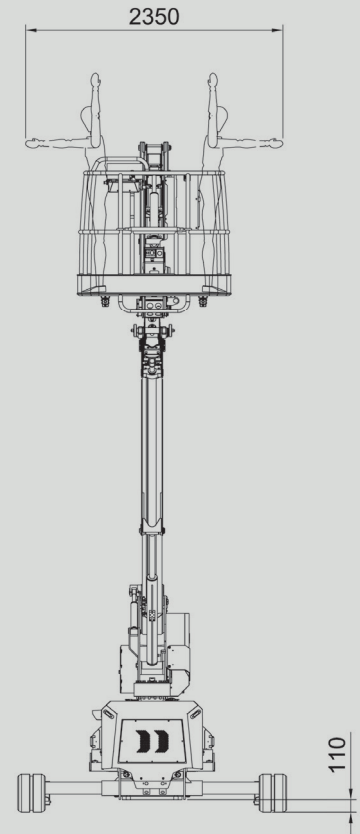
1.35 / 1.90 / 2.45 mt



Technical data

JIBBI 1670 EVO

Max working height	16,00 m
Max height basket floor	14,00 m
Moving height	9,00 m
Max outreach (load 80 kg)	8,50 m
Max outreach (load 140 kg)	7,70 m
Max outreach (load 230 kg)	6,70 m
Rotation angle	+/- 110°
Basket size	1,40 x 0,70 m
Basket rotation angle	+/- 70°
Max basket capacity	230 kg
Length in stowed position (with detached basket)	5,10 (4,40) m
Min width in stowed position	1,35 m
Medium working width	1,90 m
Max working width	2,45 m
Min height in stowed position	1,99 m
Longitudinal leveling	+/- 15°
Lateral leveling	+/- 15°
Max gradeability	25°
Max side gradeability	25°
Drive speed (fast)	2,50 km/h
Speed over transport condition	0,40 km/h



Weights

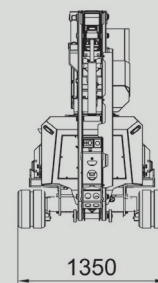
Traffic load (max working width)	3,10 KN/m ²
Total weight	3850 kg

Power

3TNM68 -AS Yanmar engine (diesel)	14 kW - 19,2 Hp @3600rpm
-----------------------------------	--------------------------

Extras - On Demand

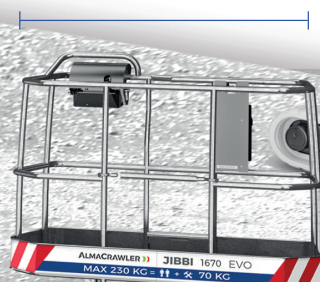
Wide Basket	1,80 x 0,70 m
Non-marking tracks	-
Electric pump 220V-2,2KW / 50Hz (Weight +30 Kg)	-
Radio remote control with rechargeable battery	-
Arctic lubricant for cold climate	-
Winch kit 200 kg	-
Ultrasonic Anti-collision System	-



Basket size

Standard
1.4 mt

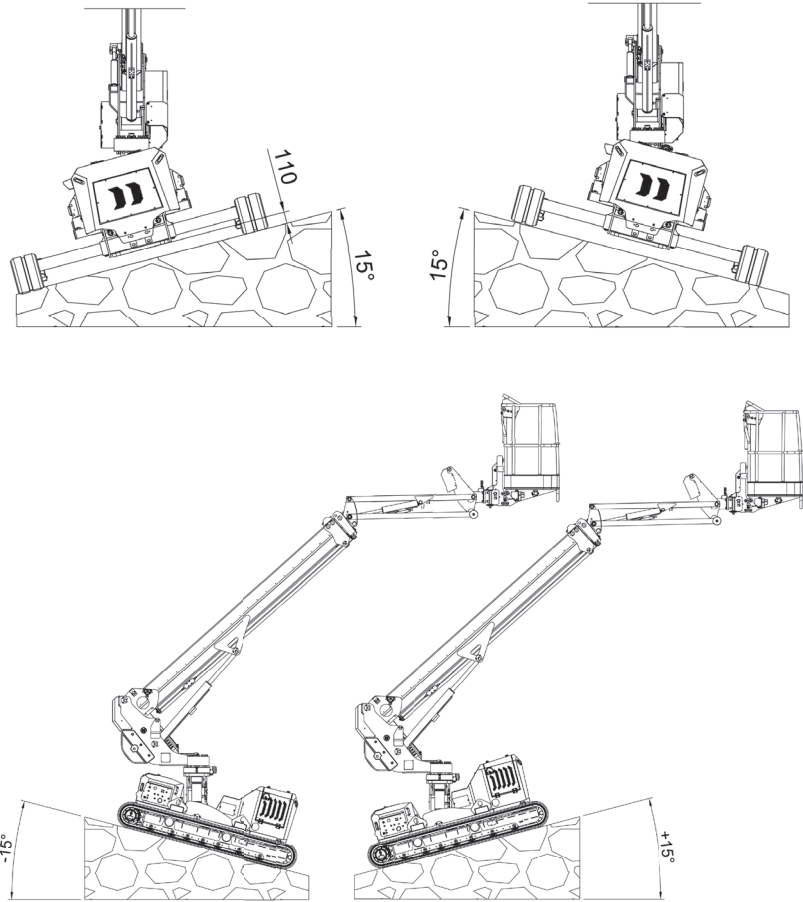
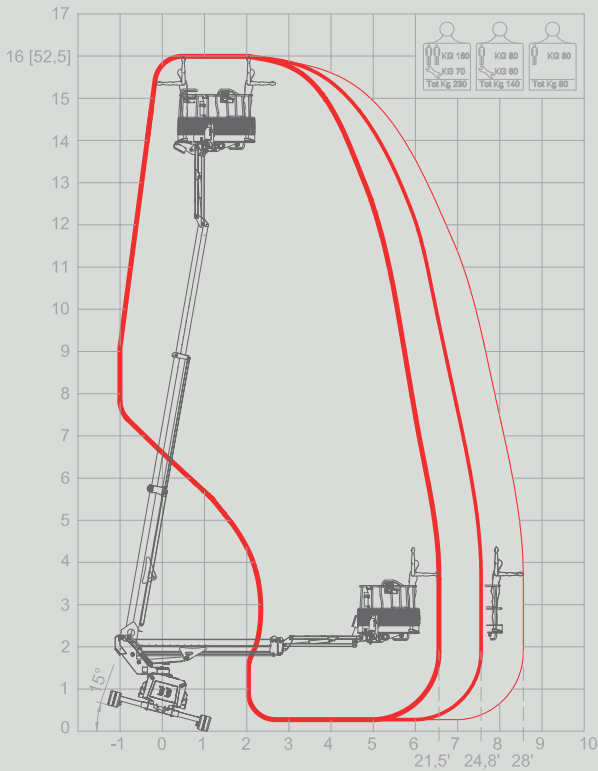
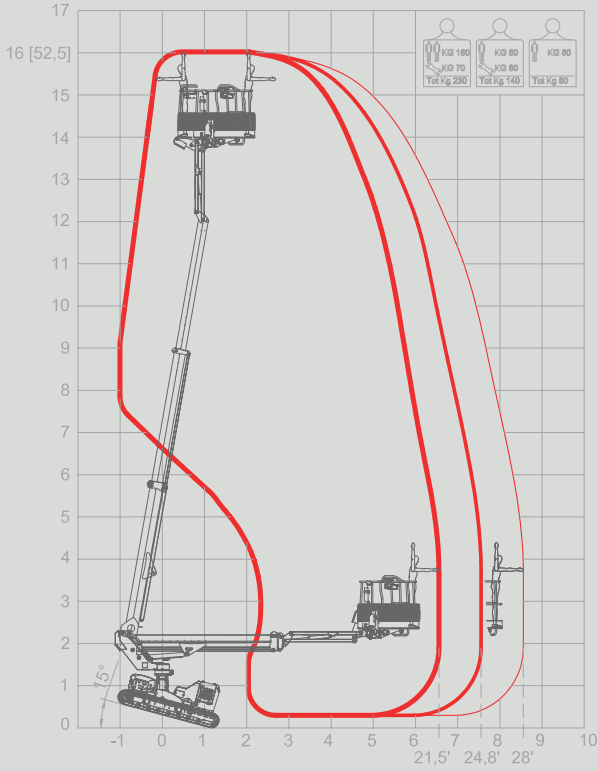
Optional
1.8 mt



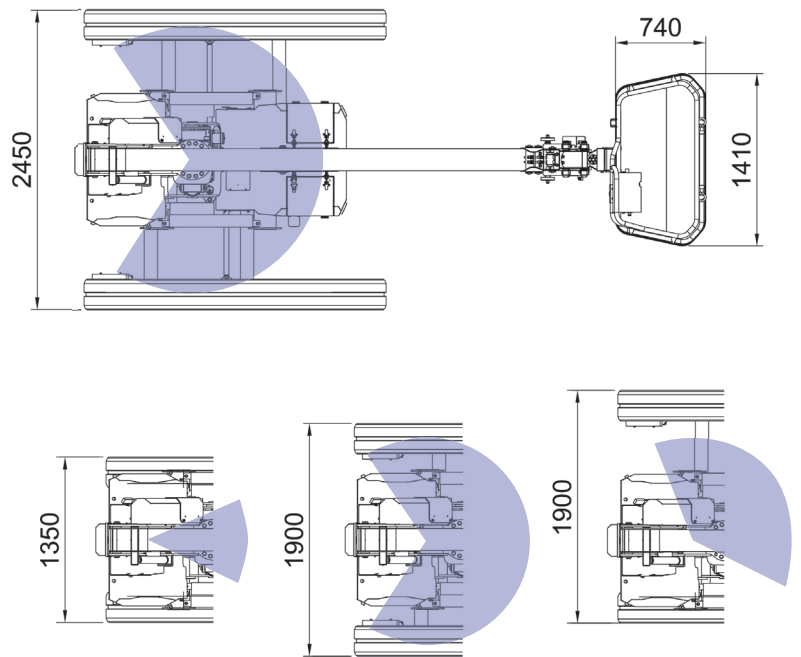
JIBBI 1670 EVO

- 80 kg
- 140 kg
- 230 kg

16.0m	230kg	19.2Hp	+/-15°	2.5 km/h	+/-15°
MAX W.H.	CAPACITY	POWER	LONG. LEVEL.	SPEED	LATER. LEVEL.



UNDERCARRIAGE CONFIGURATIONS & WORKING AREAS



Level 10, 68 Pitt Street, SYDNEY, NSW2000
Email info@almac-pacific.com.au

ALMACRAWLER 
ALMAC-PACIFIC.COM.AU

ALL DATA REPORTED IN THIS CATALOGUE ARE NOT BINDING. ALMAC SRL RESERVES THE RIGHT TO CHANGE SPECIFICATIONS WITHOUT PRIOR NOTICE.